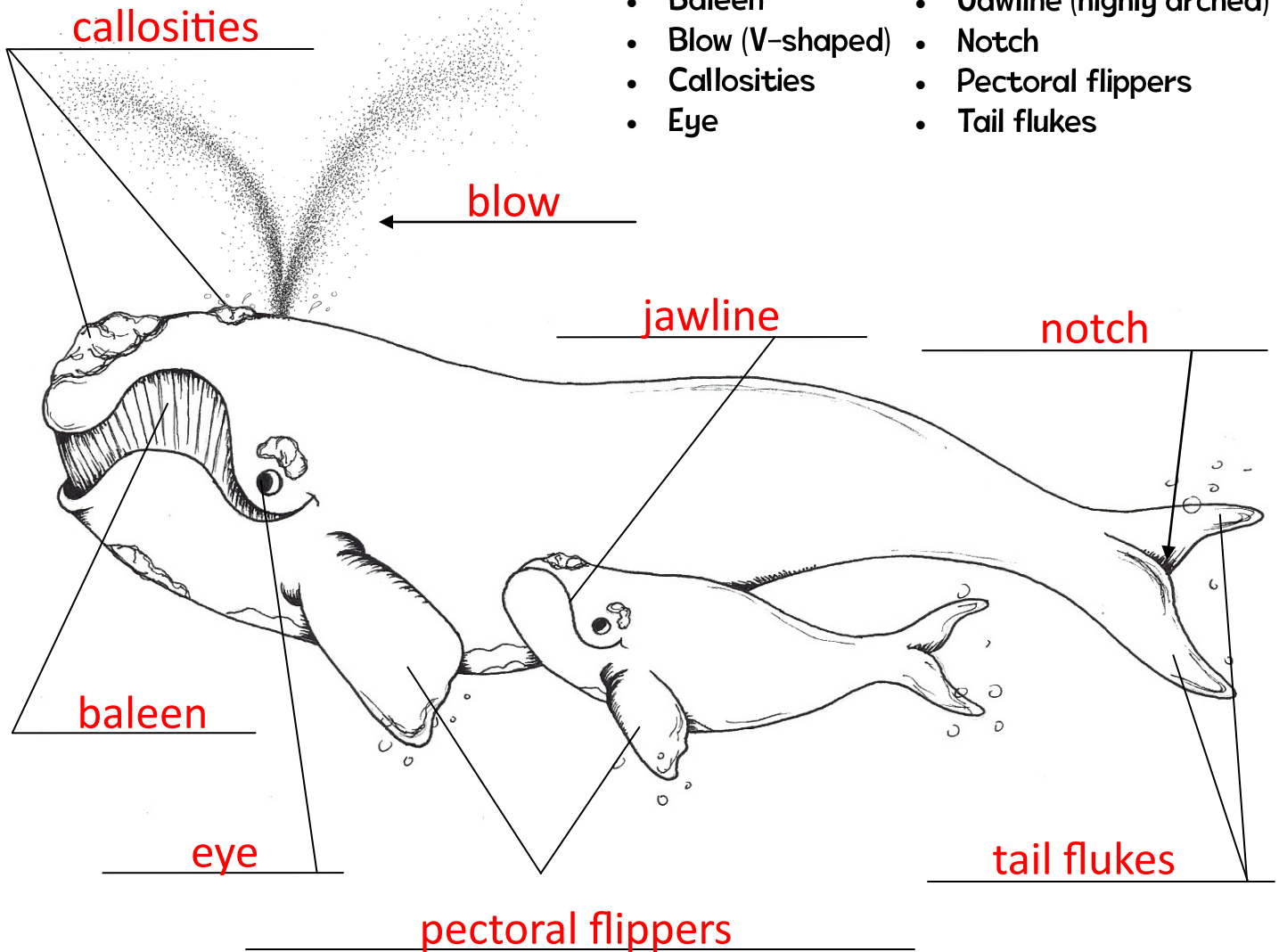


# Right Whale Anatomy & Characteristics

## Answer Key

- Baleen
- Blow (V-shaped)
- Callosities
- Eye
- Jawline (highly arched)
- Notch
- Pectoral flippers
- Tail flukes



The pectoral flippers and tail flukes of whales are important to their survival. Tail flukes move up and down and help propel whales through the water. Their

flippers help them steer left and right. If a right whale's tail or flippers are injured, it could affect how it swims, finds food, and whether or not it survives.

### How Do You Know It's a Right Whale?

When you know what to look for, right whales can be easy to tell apart from other whales.

Do you see any of these characteristics in the diagram above?

- Pectoral flippers are short, stubby, and black
- Tail flukes are black on both sides with a deep notch in the middle
- Callosities are on the head
- NO dorsal fin on the back
- V-shaped blow